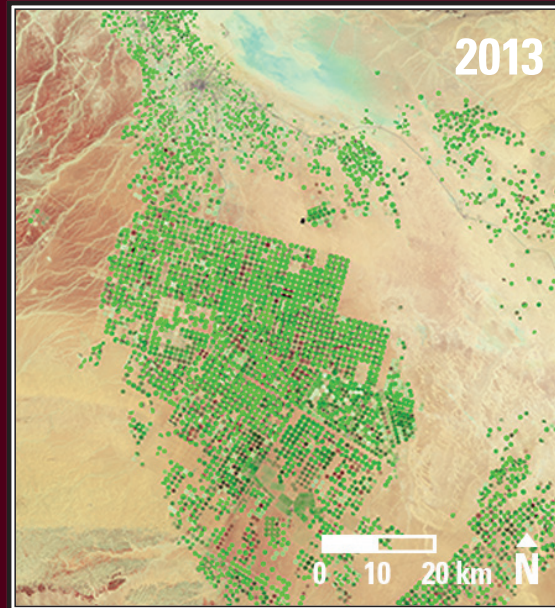
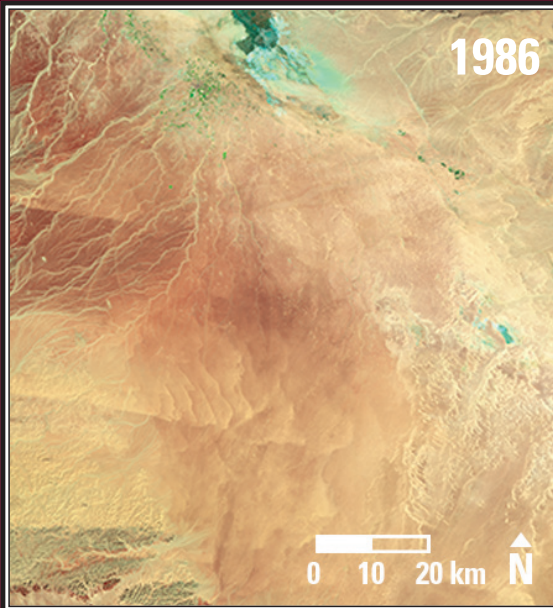


Earthshots

Wadi As-Sirhan Basin, Saudi Arabia



Wadi As-Sirhan Basin, Saudi Arabia 1986-2013

These two images reveal the effects of center-pivot irrigation systems in Saudi Arabia’s desert region known as Wadi As-Sirhan. This landscape has been transformed from wasteland into cropland covered with circular green fields. The fields are watered with groundwater, which in this arid region is a nonrenewable resource.

Date	Satellite	Bands	Res	Path	Row
Feb. 2, 1986	Landsat 5 TM	7,4,2	30 m	172	39
Aug. 23, 2013	Landsat 8 OLI	7,5,3	30 m	172	39

Earthshots: Satellite Images of Environmental Change

The U.S. Geological Survey Earth Resources Observation and Science (EROS) Center archives data from the Landsat satellites (1972–present). Earthshots presents environmental changes using Landsat images.



<http://earthshots.usgs.gov>