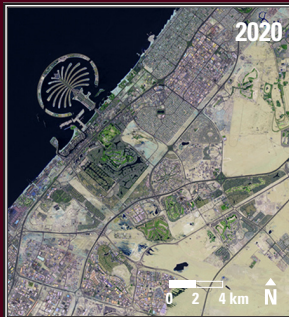


Earthshots

Dubai, United Arab Emirates



Dubai, United Arab Emirates 1984–2020

As Dubai expands, roads, buildings, and irrigated fields spread out over the desert. But the most prominent project in Dubai, and an impressive engineering feat, is the artificial islands built off its coast. The islands were built from sand dredged from the sea floor.

| Date | Satellite | Bands | Res | Path | Row |
|---------------|---------------|-------|------|------|-----|
| Apr. 29, 1984 | Landsat 5 TM | 7,4,2 | 30 m | 160 | 43 |
| June 19, 2020 | Landsat 8 OLI | 7,6,4 | 30 m | 160 | 43 |

Earthshots: Satellite Images of Environmental Change

The U.S. Geological Survey Earth Resources Observation and Science (EROS) Center archives data from the Landsat satellites (1972–present). Earthshots presents environmental changes using Landsat images.



<http://earthshots.usgs.gov>