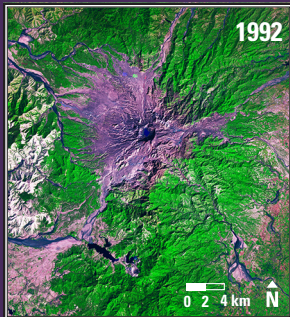
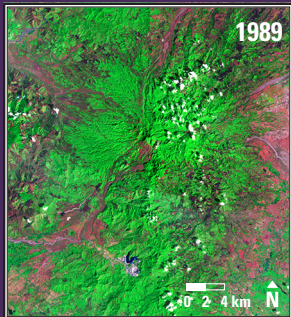


Mount Pinatubo, Philippines



Mount Pinatubo, Philippines 1989–1992

Mount Pinatubo erupted explosively on June 15, 1991, marking one of the largest volcanic eruptions of the 20th century. Volcanic ash blanketed the region. The eruption caused the summit to collapse into a caldera about 2.5 kilometers wide. Water has collected in the crater to form a small lake.

Date	Satellite	Bands	Res	Path	Row
Feb. 18, 1989	Landsat 5 TM	7,4,2	30 m	116	50
Jan. 26, 1992	Landsat 5 TM	7,4,2	30 m	116	50

Earthshots: Satellite Images of Environmental Change

The U.S. Geological Survey Earth Resources Observation and Science (EROS) Center archives data from the Landsat satellites (1972–present). Earthshots presents environmental changes using Landsat images.



<http://earthshots.usgs.gov>