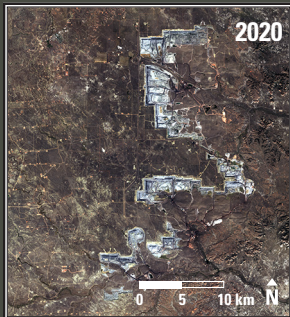
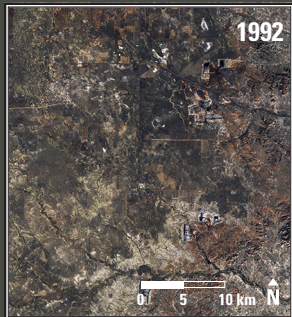


# Powder River Basin, Wyoming, USA



## Powder River Basin, Wyoming, USA 1992–2020

Surface mining for coal takes place in Wyoming's Powder River Basin. Landsat shows the progression of mining operations and the beginnings of the reclamation process. The black lines are layers of underground coal. Lighter straight lines are stepped benches that allow trucks to drive in and out of the mines.

Date	Satellite	Bands	Res	Path	Row
Sept. 23, 1992	Landsat 5 TM	3,2,1	30 m	34	30
Sept. 20, 2020	Landsat 8 OLI	4,3,2	30 m	34	30

### Earthshots: Satellite Images of Environmental Change

The U.S. Geological Survey Earth Resources Observation and Science (EROS) Center archives data from the Landsat satellites (1972–present). Earthshots presents environmental changes using Landsat images.



<http://earthshots.usgs.gov>