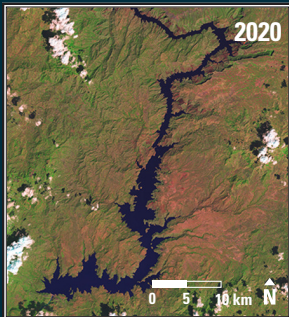
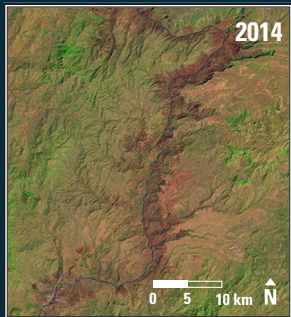


Earthshots

Gibe III Dam, Ethiopia



Gibe III Dam, Ethiopia 2014–2020

Large hydropower projects can have a massive effect on the landscape. At nearly 244 meters tall, Gibe III is Africa's tallest dam and the continent's third largest hydroelectric plant. The reservoir, now 155 kilometers long, began filling in February 2015. The reservoir fills the entire canyon that the river flowed through.

Date	Satellite	Bands	Res	Path	Row
Jan. 25, 2014	Landsat 8 OLI	7,5,4	30 m	169	55
Jan. 10, 2020	Landsat 8 OLI	7,5,4	30 m	169	55

Earthshots: Satellite Images of Environmental Change

The U.S. Geological Survey Earth Resources Observation and Science (EROS) Center archives data from the Landsat satellites (1972–present). Earthshots presents environmental changes using Landsat images.



<http://earthshots.usgs.gov>