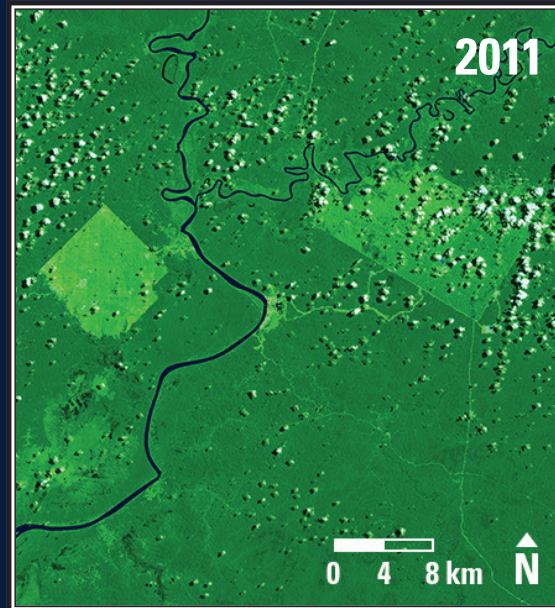
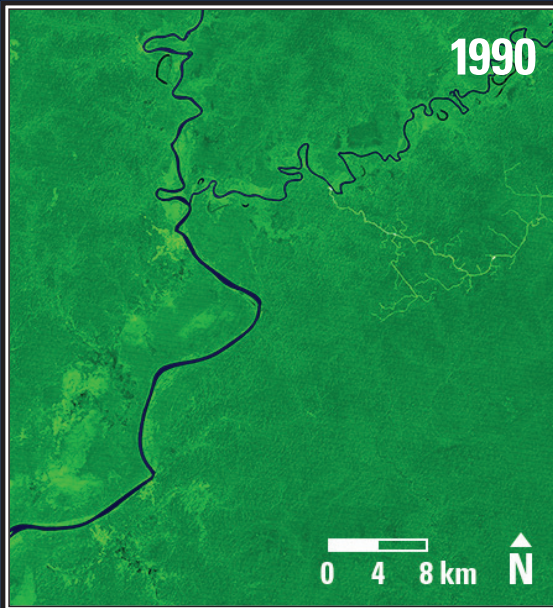


Earthshots

Papua, Indonesia



Papua, Indonesia 1990-2011

Papua is a province of Indonesia, which produces a little over half of the world's palm oil. The palm oil plantations show up clearly in Landsat images as the light green blocks in the middle of the undisturbed rain forest.

Date	Satellite	Bands	Res	Path	Row
Nov. 20, 1990	Landsat 5 TM	7,5,3	30 m	100	65
Apr. 4, 2011	Landsat 5 TM	7,5,3	30 m	100	65

Earthshots: Satellite Images of Environmental Change

The U.S. Geological Survey Earth Resources Observation and Science (EROS) Center archives data from the Landsat satellites (1972–present). Earthshots presents environmental changes using Landsat images.

