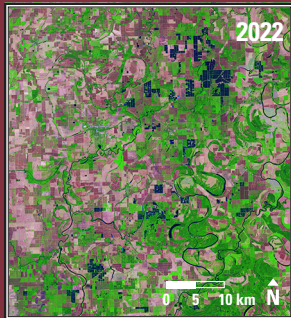
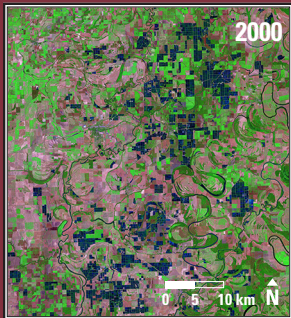


Catfish Farms, Mississippi, USA



Catfish Farms, Mississippi, USA 2000–2022

In northwestern Mississippi, the catfish industry grew during the 1980s and 1990s. Pond acreage reduced after 2000. The blue-tinted shapes mark the ponds where catfish are raised. The ponds are built above ground with levees, and the water in the ponds is 4–6 feet deep. The washed-out pink areas are harvested fields.

Date	Satellite	Bands	Res	Path	Row
Sept. 16, 2000	Landsat 5 TM	7,4,2	30 m	23	37
Sept. 13, 2022	Landsat 9 OLI	7,5,4	30 m	23	37

Earthshots: Satellite Images of Environmental Change

The U.S. Geological Survey Earth Resources Observation and Science (EROS) Center archives data from the Landsat satellites (1972–present). Earthshots presents environmental changes using Landsat images.



<https://eros.usgs.gov/image-gallery/earthshots>