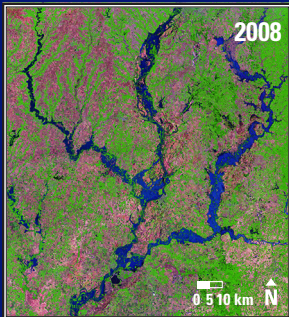
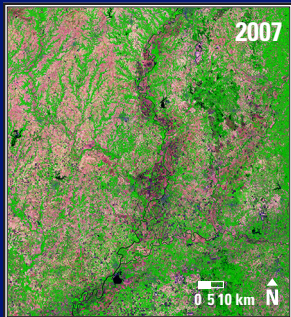


Illinois/Indiana, USA



Illinois/Indiana, USA 2007–2008

Rainfall amounts ranging from about 2 inches to more than 10 inches fell in this area on June 6–7, 2008. Springtime that year was wetter than normal, so the heavy rain easily saturated the ground. The rivers quickly rose to exceed flood stage. Landsat shows the Embarras, Wabash, Eel, and White Rivers all overflowing their banks.

Date	Satellite	Bands	Res	Path	Row
June 9, 2007	Landsat 5 TM	5,4,3	30 m	22	33
June 11, 2008	Landsat 5 TM	5,4,3	30 m	22	33

Earthshots: Satellite Images of Environmental Change

The U.S. Geological Survey Earth Resources Observation and Science (EROS) Center archives data from the Landsat satellites (1972–present). Earthshots presents environmental changes using Landsat images.



<https://eros.usgs.gov/image-gallery/earthshots>