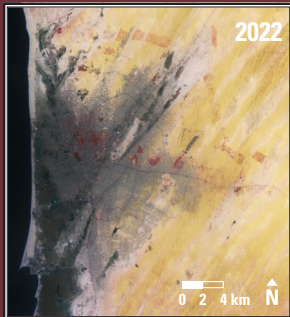


Nouakchott, Mauritania



Nouakchott, Mauritania 1973–2022

From small fishing town to rapidly expanding national capital, Nouakchott is surrounded by shifting sand dunes from the north and east, threatened by sea level rise from the west, and facing rising salty groundwater from below. As recently as 1950, the city only had about 200 residents. It now has nearly 1.5 million people.

| Date | Satellite | Bands | Res | Path | Row |
|----------------|-----------------|-------|------|------|-----|
| Sept. 25, 1973 | Landsat 1 MSS | 7,6,5 | 60 m | 220 | 48 |
| Aug. 15, 2022 | Landsat 9 OLI-2 | 5,4,3 | 30 m | 205 | 47 |

Earthshots: Satellite Images of Environmental Change

The U.S. Geological Survey Earth Resources Observation and Science (EROS) Center archives data from the Landsat satellites (1972–present). Earthshots presents environmental changes using Landsat images.



<https://eros.usgs.gov/image-gallery/earthshots>