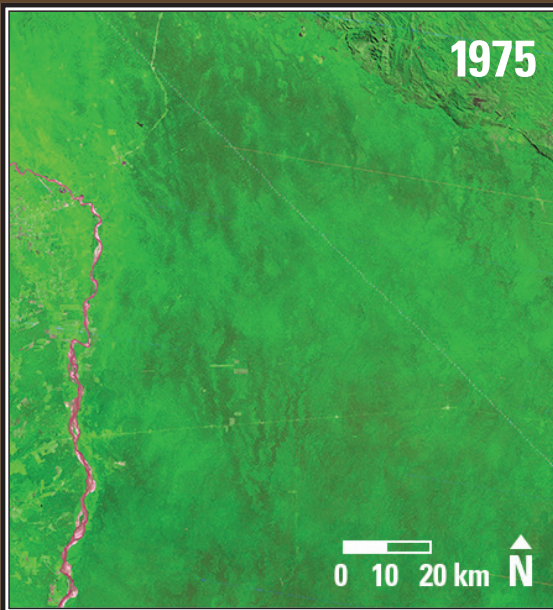


Earthshots

Santa Cruz, Bolivia



Santa Cruz, Bolivia 1975-2013

In a few decades, the lowlands surrounding Santa Cruz were transformed from dense forest into a grid-patterned expanse of agricultural lands. Many of these rectangular, light-colored fields are soybeans cultivated for export.

Date	Satellite	Bands	Res	Path	Row
June 17, 1975	Landsat 2 MSS	5,7,4	79 m	247	72
July 28, 2013	Landsat 8 OLI	7,5,3	30 m	230	72

Earthshots: Satellite Images of Environmental Change

The U.S. Geological Survey Earth Resources Observation and Science (EROS) Center archives data from the Landsat satellites (1972–present). Earthshots presents environmental changes using Landsat images.

