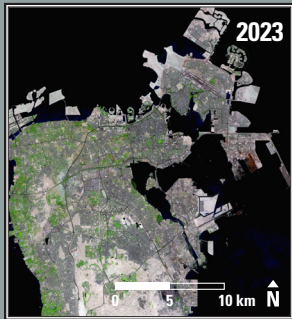
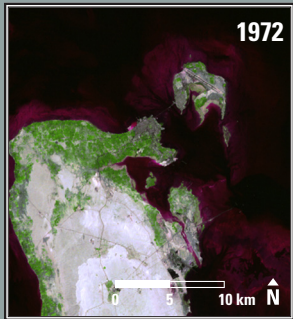


## Bahrain, Middle East



## Bahrain, Middle East 1972–2023

The most noticeable land change in Bahrain is the addition of land itself. Added land is dredged from the seabed in massive reclamation projects. The country's urban areas are expanding onto these artificial islands and inland into the desert.

Date	Satellite	Bands	Res	Path	Row
Sept. 3, 1972	Landsat 1 MSS	4,7,5	60 m	175	42
Aug. 28, 2023	Landsat 9 OLI	7,5,4	30 m	163	42

### Earthshots: Satellite Images of Environmental Change

The U.S. Geological Survey Earth Resources Observation and Science (EROS) Center archives data from the Landsat satellites (1972–present). Earthshots presents environmental changes using Landsat images.



[eros.usgs.gov/earthshots](https://eros.usgs.gov/earthshots)