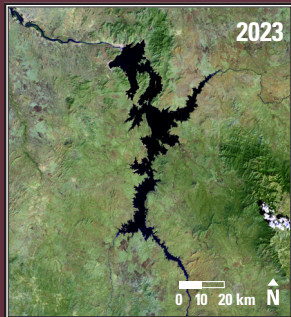
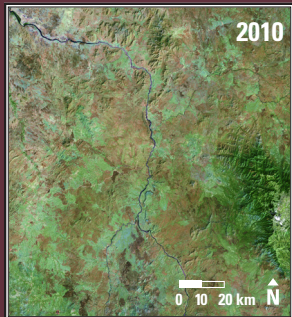


Grand Ethiopian Renaissance Dam, Ethiopia



Grand Ethiopian Renaissance Dam, Ethiopia 2010–2023

Under construction since 2011, the Grand Ethiopian Renaissance Dam spans the Blue Nile River in Ethiopia. The curved shape southwest of the main dam is referred to as the Saddle Dam, and the reservoir's water level reached it for the first time in 2022. The dam's power generation will double Ethiopia's previous output of electricity.

Date	Satellite	Bands	Res	Path	Row
Jan. 12, 2010	Landsat 5 TM	7,5,3	30 m	171	52, 53
Jan. 8, 2023	Landsat 9 OLI	7,6,4	30 m	171	52, 53

Earthshots: Satellite Images of Environmental Change

The U.S. Geological Survey Earth Resources Observation and Science (EROS) Center archives data from the Landsat satellites (1972–present). Earthshots presents environmental changes using Landsat images.



eros.usgs.gov/earthshots