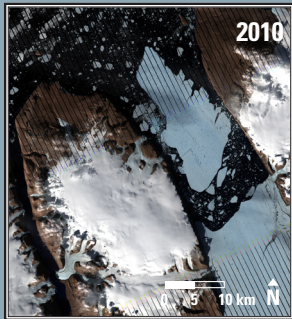
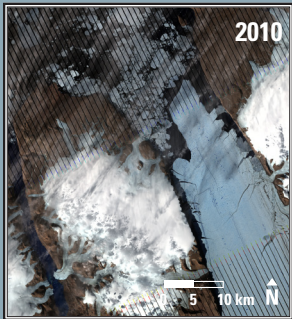


Petermann Glacier, Greenland



Petermann Glacier, Greenland 2010

A huge iceberg broke off Petermann Glacier in 2010. Located on the northwestern coast of Greenland, Petermann Glacier is the longest floating glacier in the Northern Hemisphere. The massive calving event removed 28 kilometers of the ice shelf. The result was an ice island four times the size of Manhattan.

Date	Satellite	Bands	Res	Path	Row
July 28, 2010	Landsat 7 ETM+	4,3,2	30 m	45	1
Aug. 13, 2010	Landsat 7 ETM+	4,3,2	30 m	45	1

Earthshots: Satellite Images of Environmental Change

The U.S. Geological Survey Earth Resources Observation and Science (EROS) Center archives data from the Landsat satellites (1972–present). Earthshots presents environmental changes using Landsat images.



eros.usgs.gov/earthshots