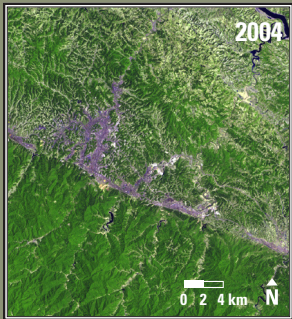


Shiyan, China



Shiyan, China 2004–2023

In Shiyan, China, land is being prepared for building by flattening mountaintops. Explosives are used to level the hills, and the displaced soil and rock are then used to fill in the valleys. Most of the new land is used for warehouses and industry.

Date	Satellite	Bands	Res	Path	Row
May 17, 2004	Landsat 5 TM	7,5,3	30 m	125	37
May 14, 2023	Landsat 9 OLI	7,6,4	30 m	125	37

Earthshots: Satellite Images of Environmental Change

The U.S. Geological Survey Earth Resources Observation and Science (EROS) Center archives data from the Landsat satellites (1972–present). Earthshots presents environmental changes using Landsat images.



eros.usgs.gov/earthshots