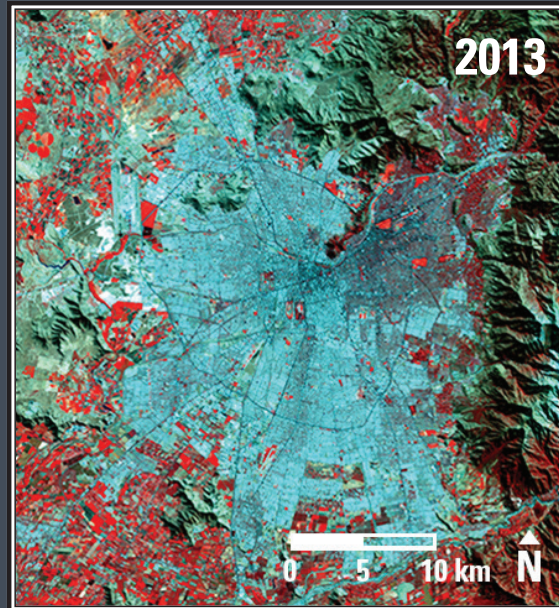
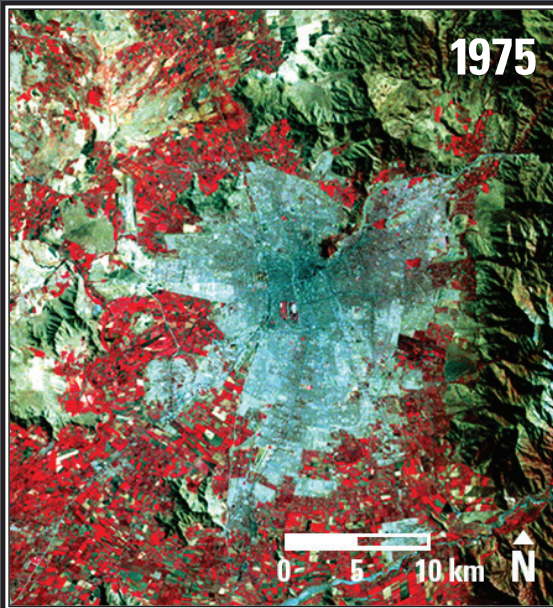


Earthshots

Santiago, Chile



Santiago, Chile 1975-2013

From 1975 to 2013, Santiago's population increased from under 3.5 million to about 6 million. After World War II, Chile's population urbanized earlier than many other countries, already 68% urban by 1960 and 89% by 2010. Agricultural lands west and south of the city are shown in bright red. The Andes Mountains are to the east.

Date	Satellite	Bands	Res	Path	Row
Mar. 22, 1975	Landsat 2 MSS	6,5,4	79 m	250	83
Apr. 12, 2013	Landsat 8 OLI	5,4,3	30 m	233	83

Earthshots: Satellite Images of Environmental Change

The U.S. Geological Survey Earth Resources Observation and Science (EROS) Center archives data from the Landsat satellites (1972–present). Earthshots presents environmental changes using Landsat images.



<http://earthshots.usgs.gov>