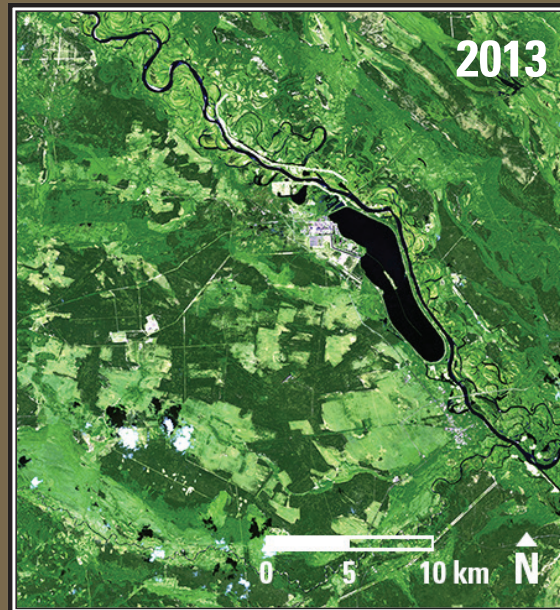


Earthshots

Chernobyl, Ukraine



Chernobyl, Ukraine 1986-2013

A nuclear accident devastated the region near Chernobyl, Ukraine, on April 26, 1986. Farm fields are the bright green and tan shapes in the 1986 image. Those farms have converted to natural vegetation, the flat gray-green in the 2013 image.

Date	Satellite	Bands	Res	Path	Row
Apr. 29, 1986	Landsat 5 TM	7,5,3	30 m	182	24
Aug. 13, 2013	Landsat 8 OLI	7,6,4	30 m	182	24

Earthshots: Satellite Images of Environmental Change

The U.S. Geological Survey Earth Resources Observation and Science (EROS) Center archives data from the Landsat satellites (1972–present). Earthshots presents environmental changes using Landsat images.

