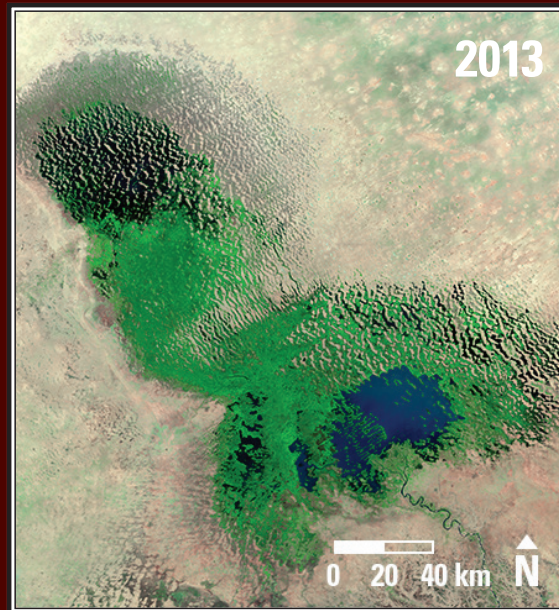


# Earthshots

## Lake Chad, West Africa



### Lake Chad, West Africa 1973-2013

Lake Chad lies between Chad, Niger, Nigeria, and Cameroon in West Africa. This area's prolonged drought and increased water use have shrunk the lake from about 25,000 km<sup>2</sup> in 1963 to less than 2,000 km<sup>2</sup> today. Old dunes are again uncovered, and wetlands (shown as green) have replaced open water.

Date	Satellite	Bands	Res	Path	Row
Jan. 1973	Landsat 1 MSS	5,7,4	79 m	198-199	50-51
May 2013	Landsat 8 OLI	7,5,4	30 m	184-186	50-52

### Earthshots: Satellite Images of Environmental Change

The U.S. Geological Survey Earth Resources Observation and Science (EROS) Center archives data from the Landsat satellites (1972-present). Earthshots presents environmental changes using Landsat images.



<http://earthshots.usgs.gov>